

*Kenton C. Ward, CFM*  
Surveyor of Hamilton County  
Phone (317) 776-8495  
Fax (317) 776-9628

Suite 188  
One Hamilton County Square  
Noblesville, Indiana 46060-2230

### ***Map Correction-Field Verification***

**Drain Number:** #345

**Drain Length:** N/A

**Drain Name:** Clark-Inman Drain

**Change + / - :** N/A

**Date:** 02-04-2015

**New Length:** N/A

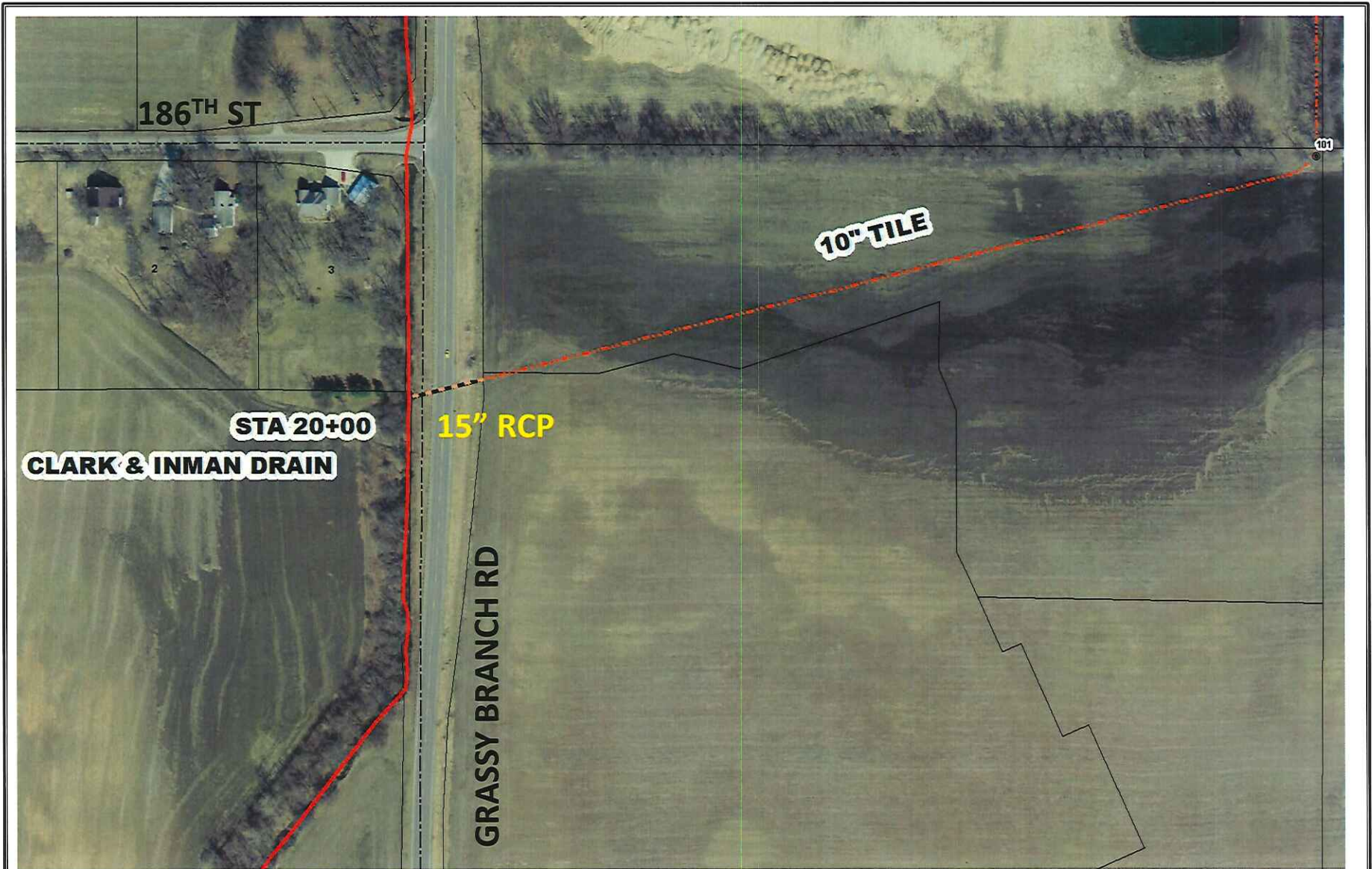
**Verified By:** GRH, SLM

---

#### **Notes & Sketch:**

Original Tile was replaced under Grassy Branch Road. See the attached Road Plan for details. This was done by the Hamilton County Highway Department. The tile was upgrade from a 10" Tile to a 15" RCP.

Suzanne L. Mills  
GIS Specialist



This map was compiled by the Hamilton County Surveyor's Office. Although strict accuracy standards have been employed in the compilation of this map, Hamilton County does not warrant or guarantee the accuracy of the information contained herein and disclaims any and all liability resulting from any error or omission in this map.

## CLARK INMAN DRAIN STA 18+92 TO 20+00 (TERMINUS)

Printing Date: 1/9/2015  
 Prepared By: Suzanne Mills, GISP  
 Hamilton County Surveyor's Office  
 One Hamilton County Square, Ste 18E  
 Noblesville, IN 46060  
 317-776-8495

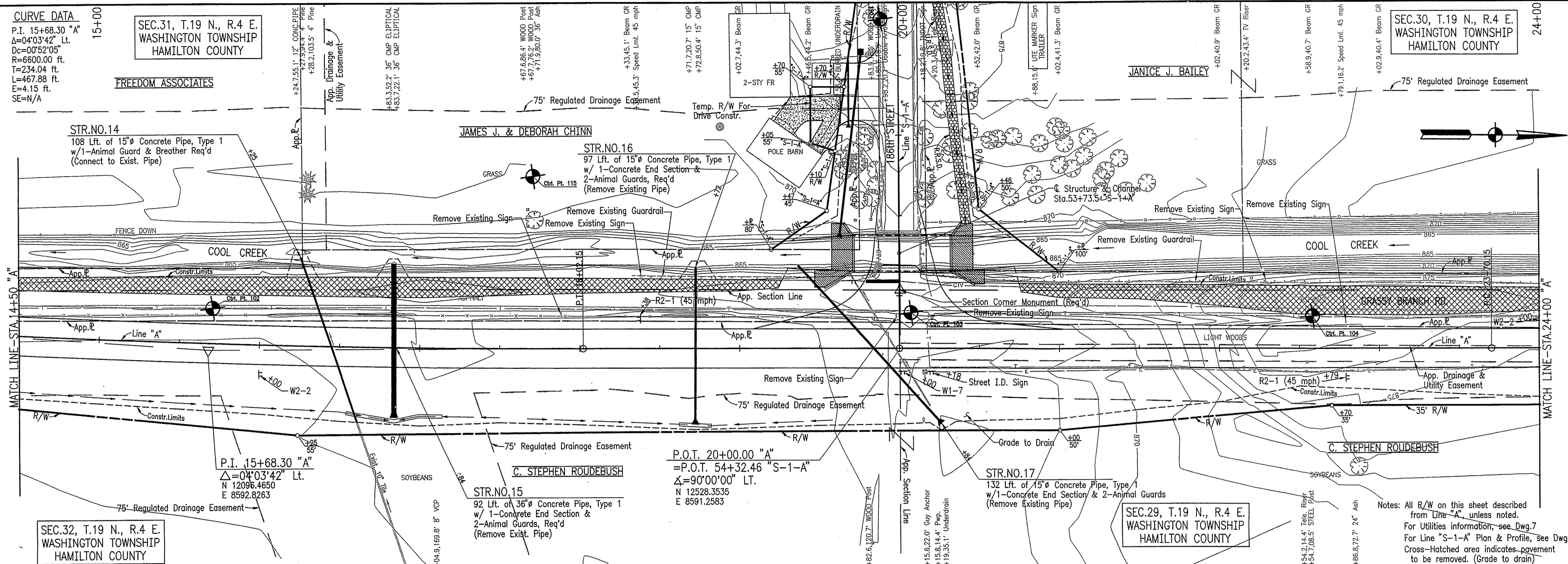


3084806M  
**CURVE DATA**  
 P.I. 15+68.30 "A"  
 $\Delta=04^{\circ}03'42"$  Lt.  
 $D_c=00^{\circ}52'05"$   
 $R=6600.00$  ft.  
 $T=234.04$  ft.  
 $L=467.88$  ft.  
 $E=4.15$  ft.  
 $SE=N/A$

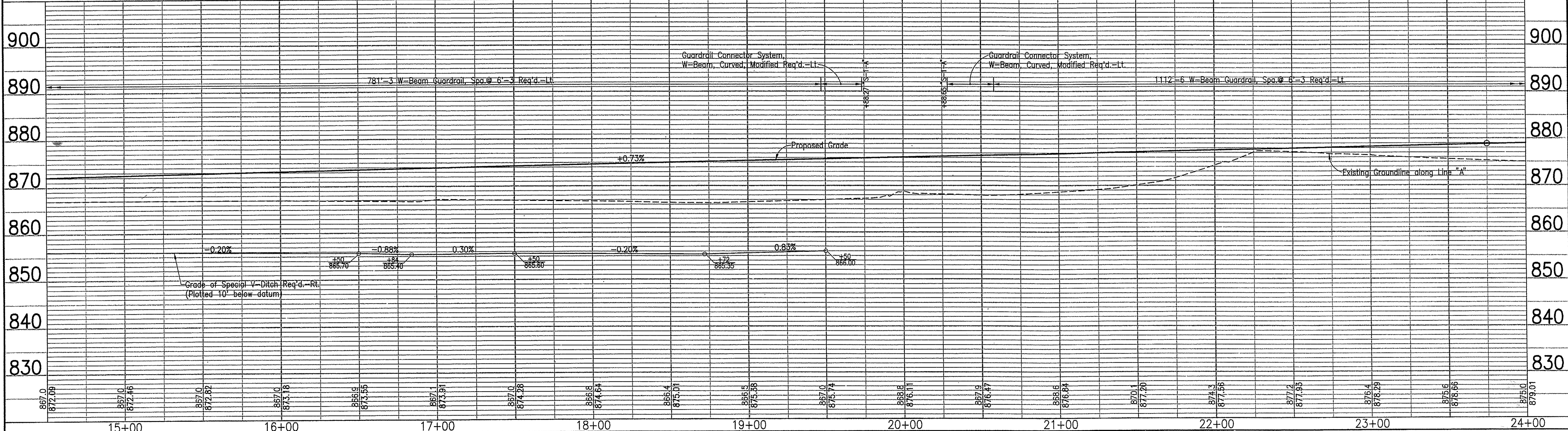
**SEC.31, T.19 N., R.4 E.  
 WASHINGTON TOWNSHIP  
 HAMILTON COUNTY**

**FREEDOM ASSOCIATES**

**SEC.30, T.19 N., R.4 E.  
 WASHINGTON TOWNSHIP  
 HAMILTON COUNTY**



Notes: All R/W on this sheet described from Line "A", unless noted.  
 For Utilities information, see Dwg.7  
 For Line "S-1-A" Plan & Profile, see Dwg.8  
 Cross-Hatched area indicates pavement to be removed. (Grade to drain)



N 12099.3340 E 8566.8597 CONTROL PT.#102	N 12535.5099 E 8569.2179 CONTROL PT.#103	N 12786.4300 E 8570.2777 CONTROL PT.#104	N 12299.2793 E 8485.2552 CONTROL PT.#115		RECOMMENDED FOR APPROVAL  DESIGN ENGINEER DATE	HAMILTON COUNTY, INDIANA <b>PLAN &amp; PROFILE          LINE "A"</b>	SCALE HORIZ: 1"=30' VERT: 1"=10' DESIGNATION DRAWING 6 of 40 BRIDGE FILE HAMILTON 110
DESIGNED: TSW CHECKED: CMS		DRAWN: DAM CHECKED: TSW		HAMILTON COUNTY, INDIANA <b>PLAN &amp; PROFILE          LINE "A"</b>			